

LIVE IN **DUBAI SOUTH** RESIDENTIAL DISTRICT

AFS
REAL ESTATE
STAY AHEAD, INVEST SMART

db
DUBRICKS
POSSIBILITIES ARE LIMITLESS

THE PULSE VILLAS

A development by

دبي الجنوب
**DUBAI
SOUTH**



THE PULSE VILLAS

A development by  **DUBAI SOUTH**



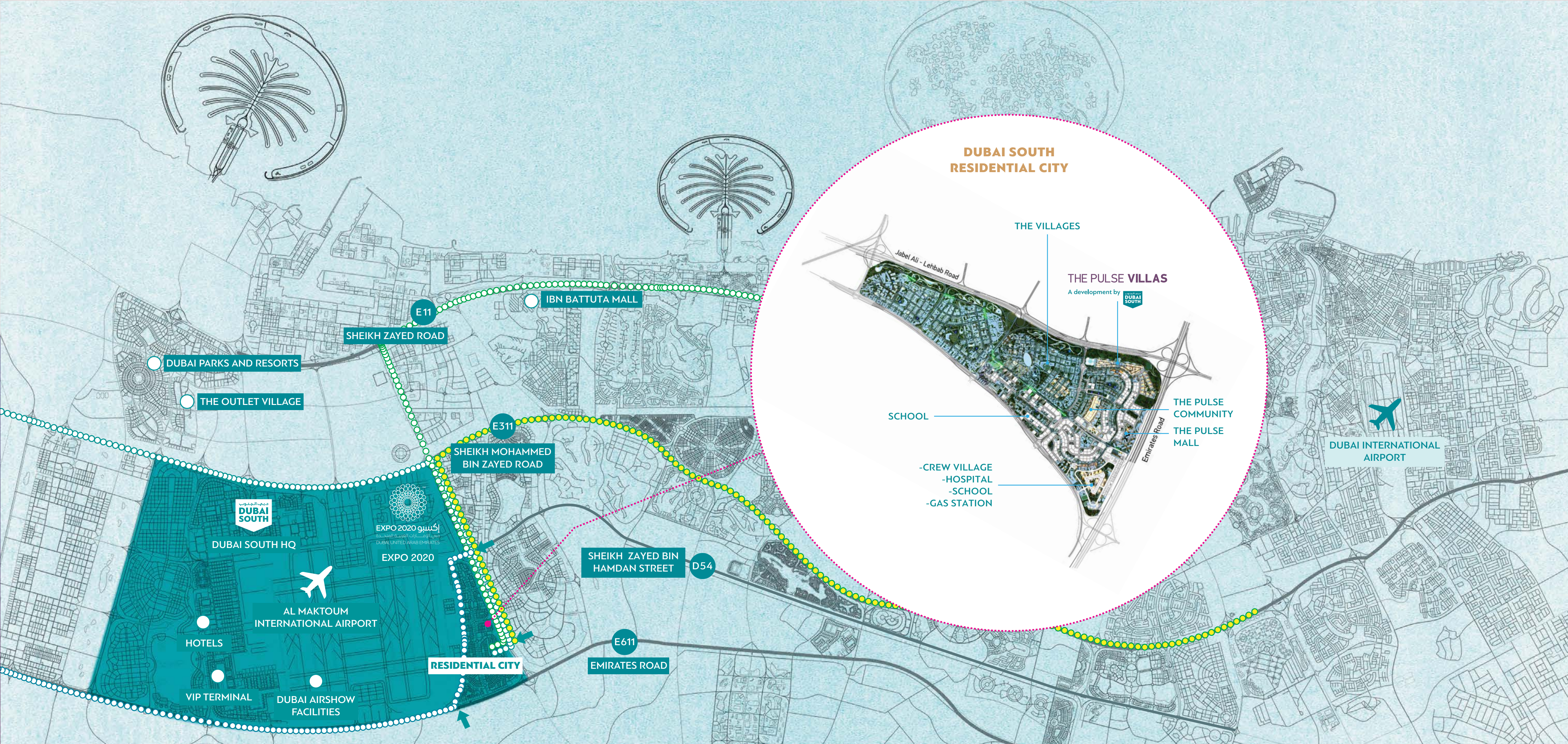
INTRODUCING THE PULSE VILLAS

Live in Dubai South's newest and most desirable neighbourhood, The Pulse Villas.

This is a master planned community, where you can experience the Villa & Townhouse lifestyle in a youthful and dynamic environment. Perfect for families, The Pulse Villas embraces and promotes a healthy and active way of life. Surrounded by greenery with access to a range of state-of-the-art private facilities, this is the ideal place to make your home.



LOCATION MAP



THE PULSE VILLAS


A development by

دبي الجنوب
DUBAI
SOUTH





THE PULSE VILLAS

A development by  **DUBAI SOUTH**

STARTING FROM
AED 850,000
2BR TOWNHOUSE

50% DURING CONSTRUCTION	50% 2 YEARS POST-COMPLETION	
2% DLD FEES	5% DOWN PAYMENT	HANDOVER 2024

THE PULSE VILLAS

A development by  DUBAI SOUTH



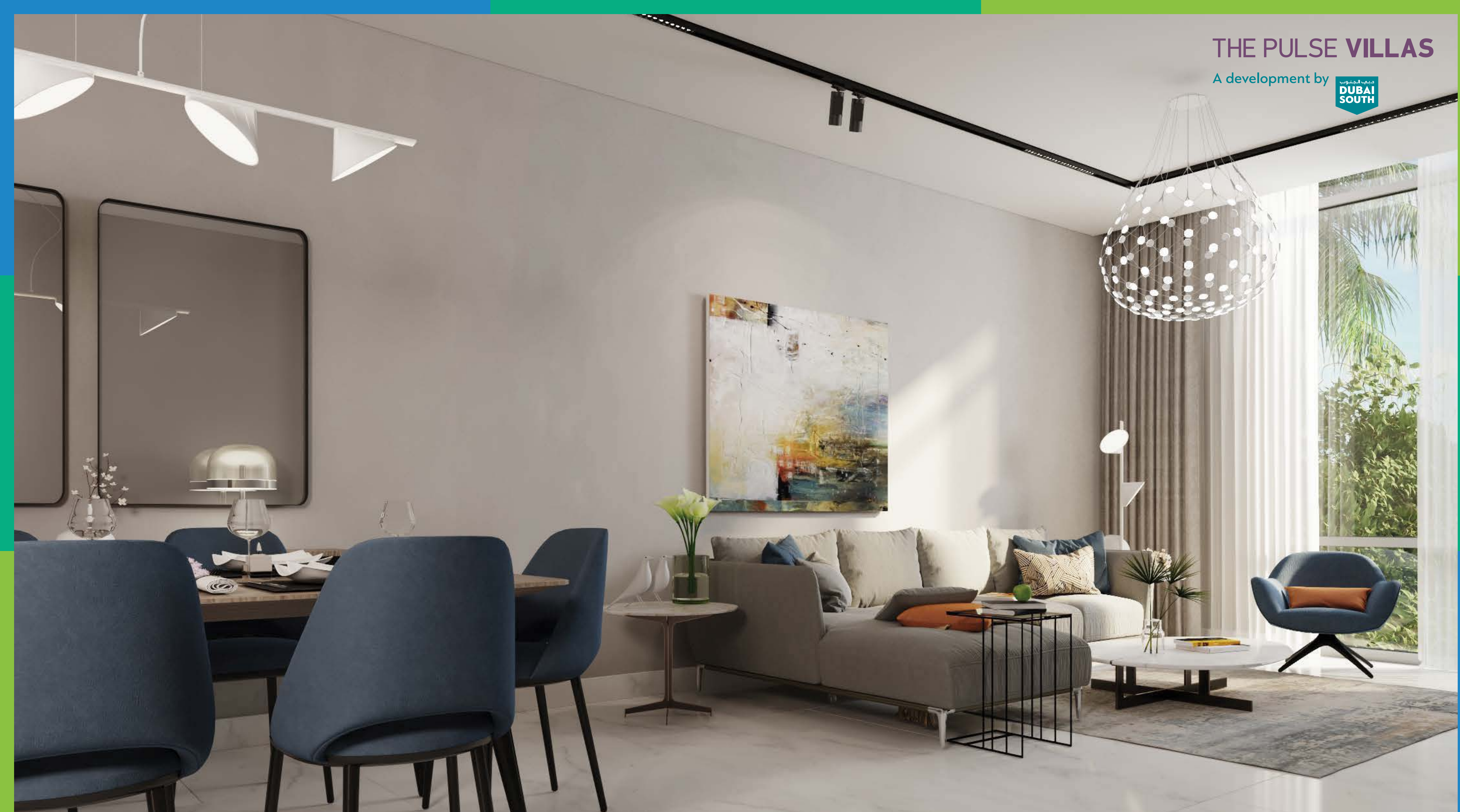
SPACIOUS 2, 3 & 4 BEDROOM VILLAS

The Pulse Villas have been designed with families in mind. Every home comes with a private garden, maid's room, closed kitchen, storage room & 2 shaded parking spaces, and all bedrooms have en-suite bathrooms.


Starting from 1,890 sq.ft – 2,720 sq.ft

THE PULSE VILLAS

A development by  DUBAI SOUTH



THE PULSE VILLAS

A development by  **DUBAI SOUTH**



THE PULSE VILLAS

A development by  DUBAI SOUTH




A COMPLETE INFRASTRUCTURE

The Pulse Villas is a dynamic community, that promotes a healthy lifestyle. Beautifully landscaped, you can enjoy exercising around the jogging & cycling tracks, at the private fitness center, Sports Zone, and swimming pools. There are ample activities for kids, with playgrounds and parks. Plus, a Mosque and retail Center with F&B.

Everything you could possible need to really feel at home.

THE PULSE VILLAS

A development by  **DUBAI SOUTH**



THE PULSE VILLAS

A development by  DUBAI SOUTH




LIVE NEXT TO EXPO 2020

Enjoy complete convenience with:

- Direct access to EXPO Road
- 5 minute drive to DWC Airport and EXPO 2020



THE PULSE VILLAS

A development by  DUBAI SOUTH



EXPO ROAD

- 2BR TOWNHOUSES
- 3BR TOWNHOUSES
- 4BR TOWNHOUSES
- ENTRANCE



FLOOR PLAN

TWO BEDROOM

CORNER TYPE

BUA 1,894.8 SQ. FT.
GARDEN 688.7 SQ. FT.

GROUND LEVEL PLAN



FIRST LEVEL PLAN



THE PULSE VILLAS

A development by  DUBAI SOUTH

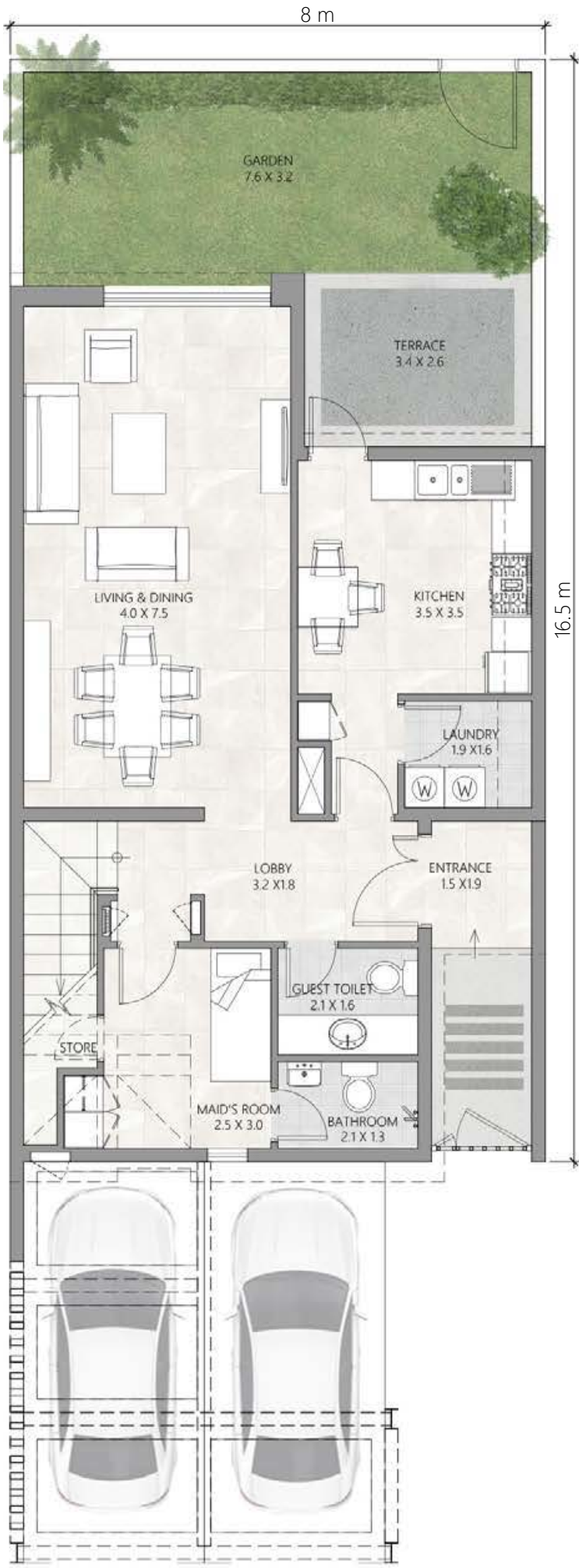
FLOOR PLAN

TWO BEDROOM

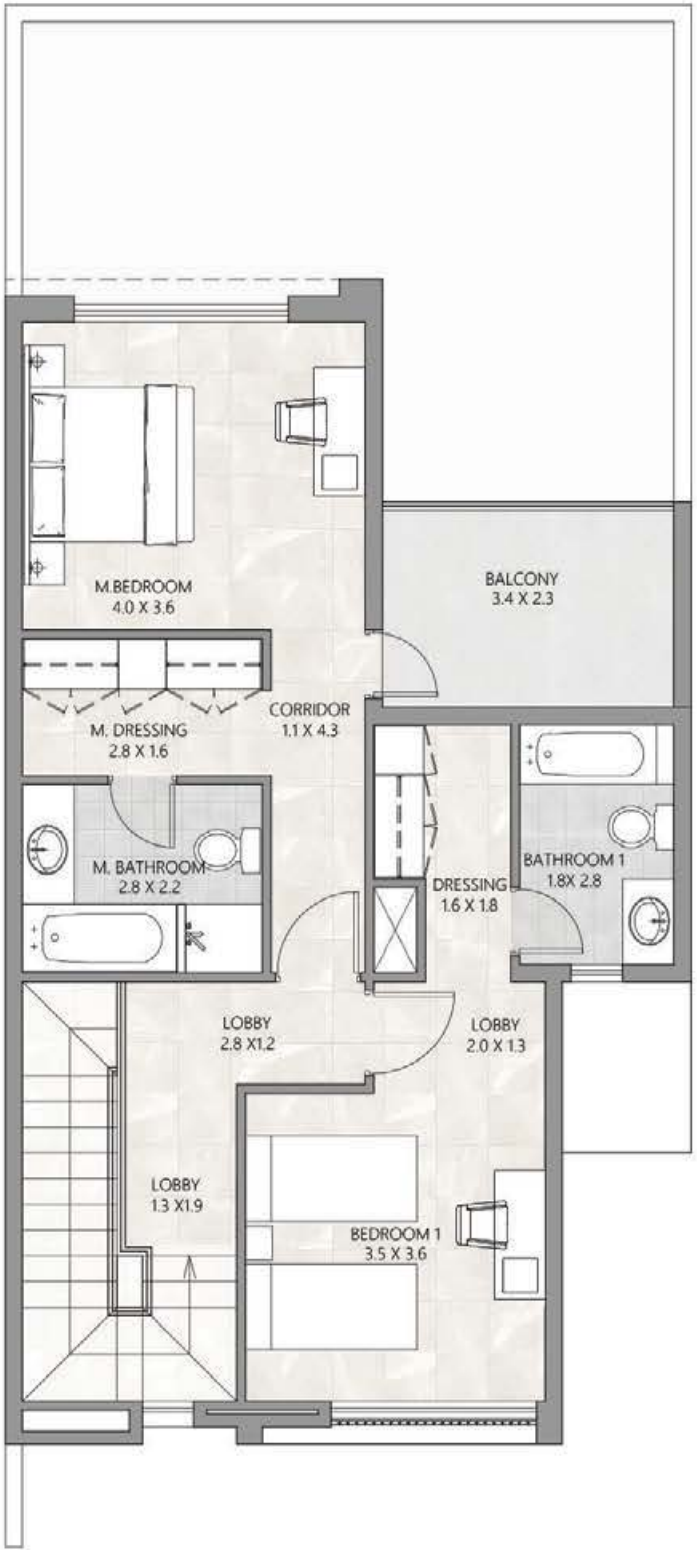
MIDDLE TYPE

BUA 1,900.6 SQ. FT.
GARDEN 533.8 SQ. FT.

GROUND LEVEL PLAN



FIRST LEVEL PLAN



THE PULSE VILLAS

A development by



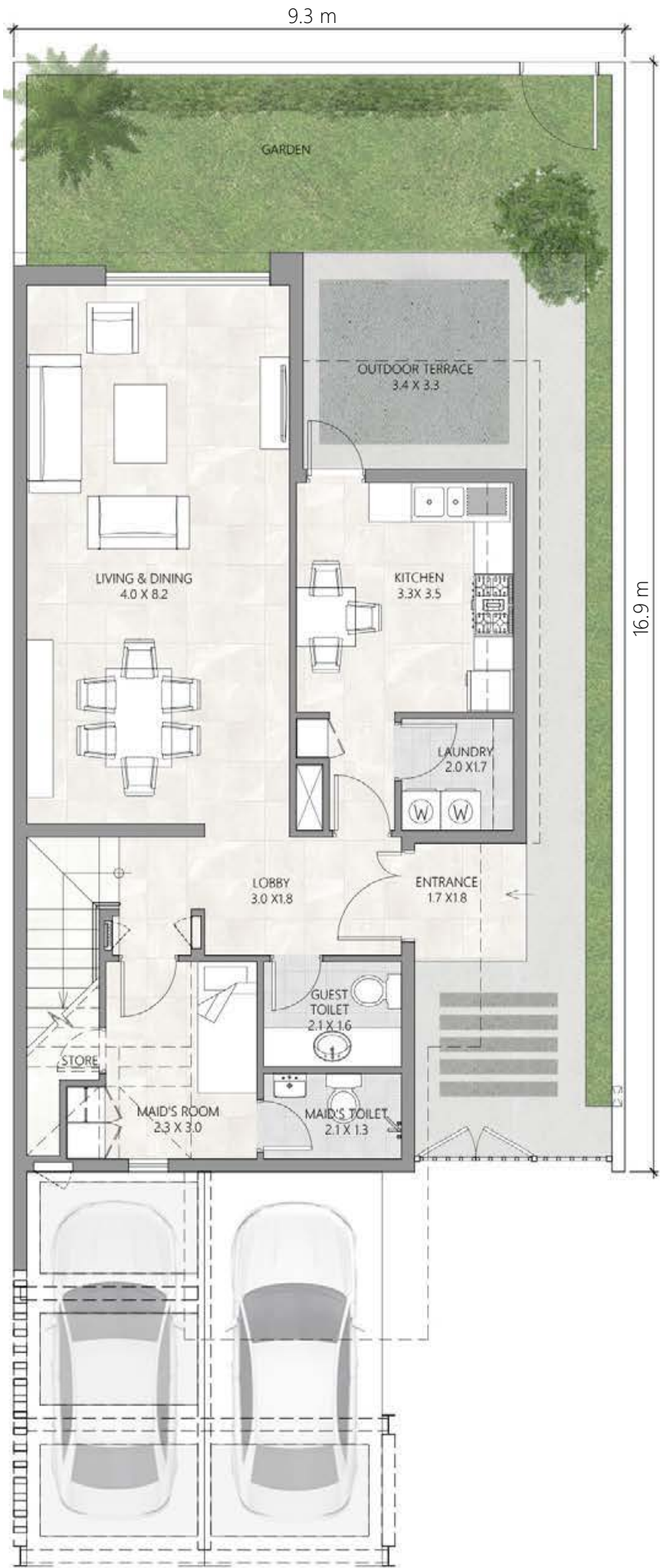
FLOOR PLAN

THREE BEDROOM-A

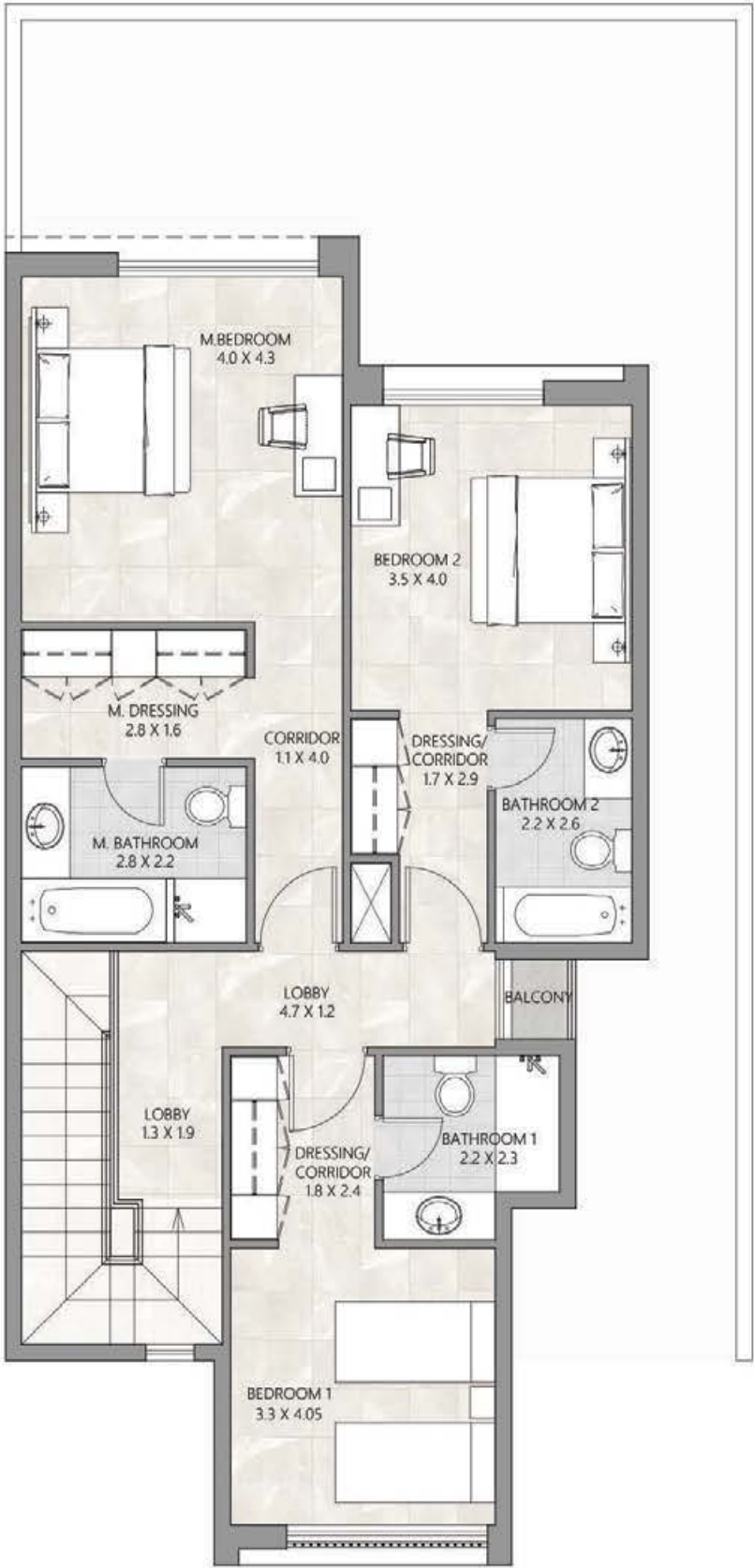
CORNER TYPE

BUA 2,117.6 SQ. FT.
GARDEN 678.4 SQ. FT.

GROUND LEVEL PLAN



FIRST LEVEL PLAN



THE PULSE VILLAS

A development by  DUBAI SOUTH

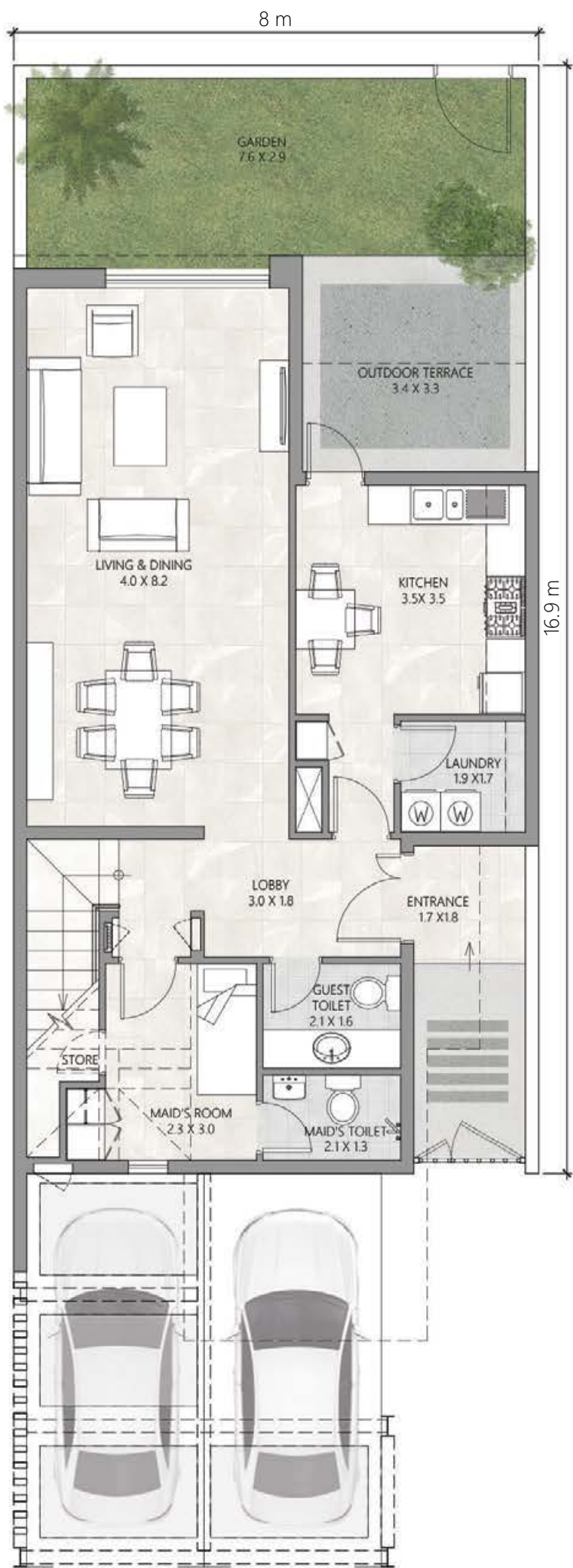
FLOOR PLAN

THREE BEDROOM-A

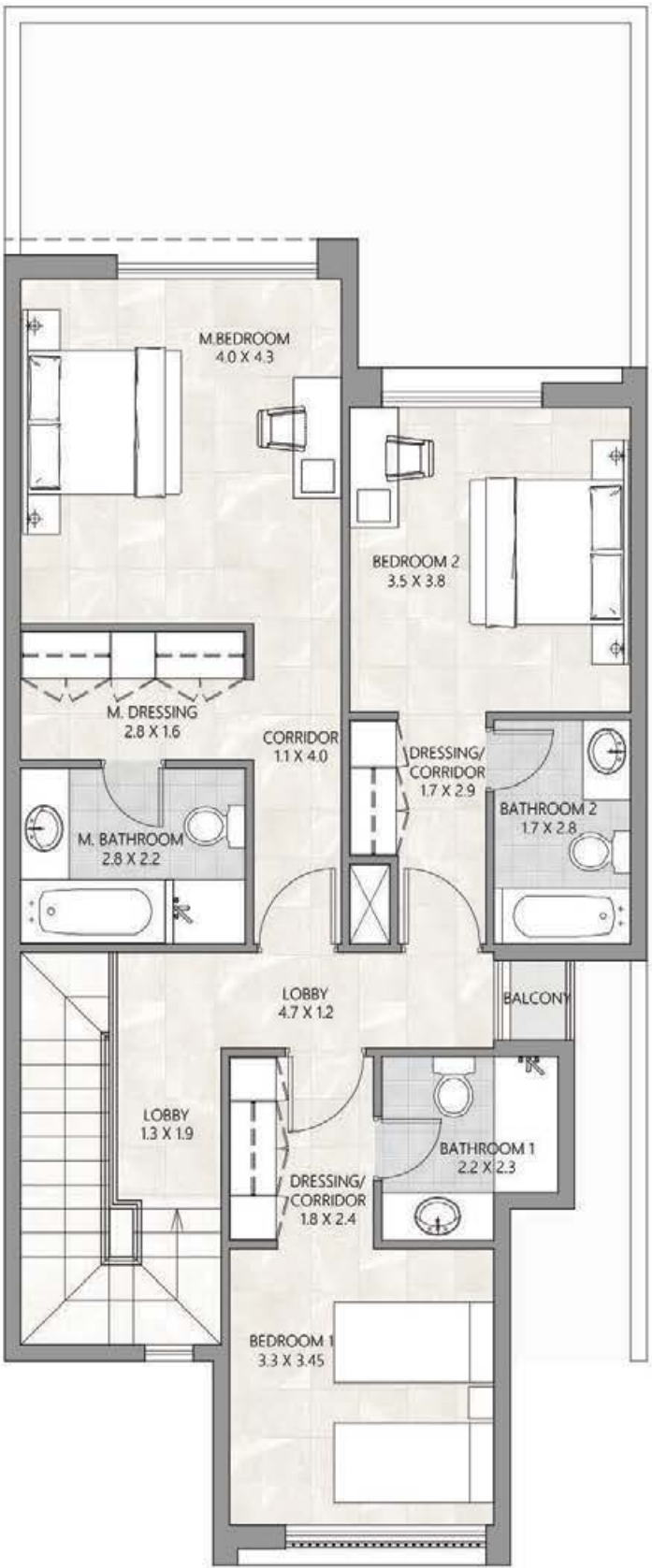
MIDDLE TYPE

BUA 2,123.6 SQ. FT.
GARDEN 460.2 SQ. FT.

GROUND LEVEL PLAN



FIRST LEVEL PLAN



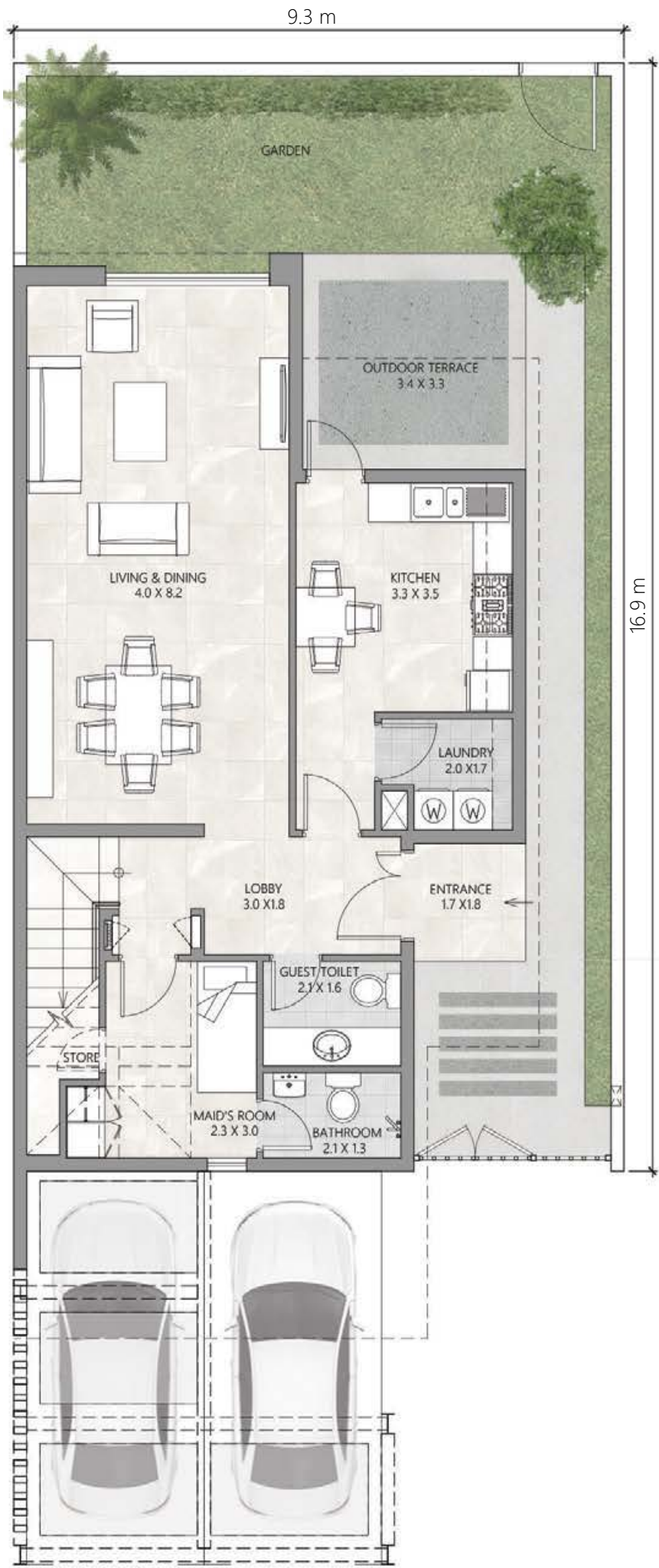
FLOOR PLAN

THREE BEDROOM-B

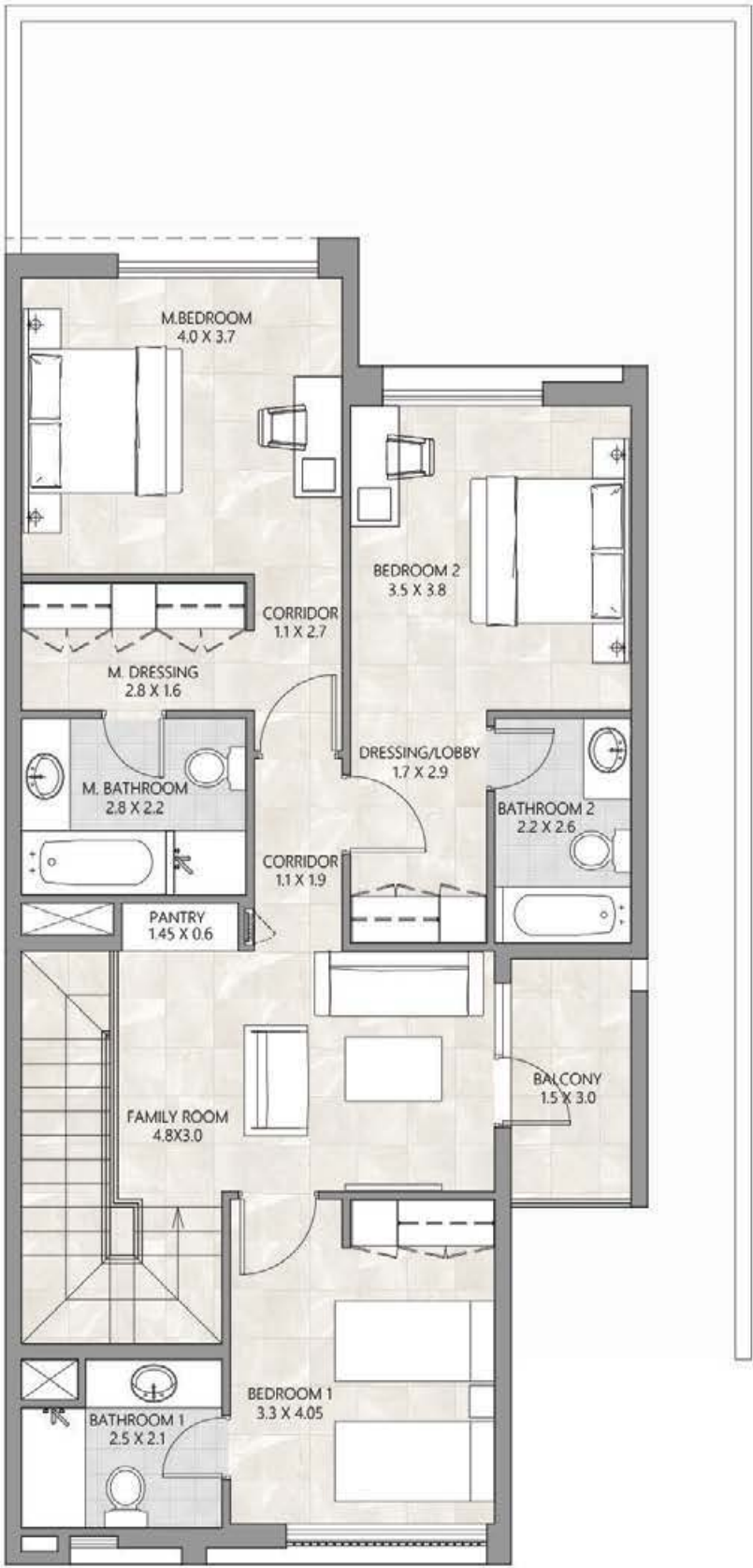
CORNER TYPE

BUA 2,218.9 SQ. FT.
GARDEN 763.7 SQ. FT.

GROUND LEVEL PLAN



FIRST LEVEL PLAN



THE PULSE VILLAS

A development by



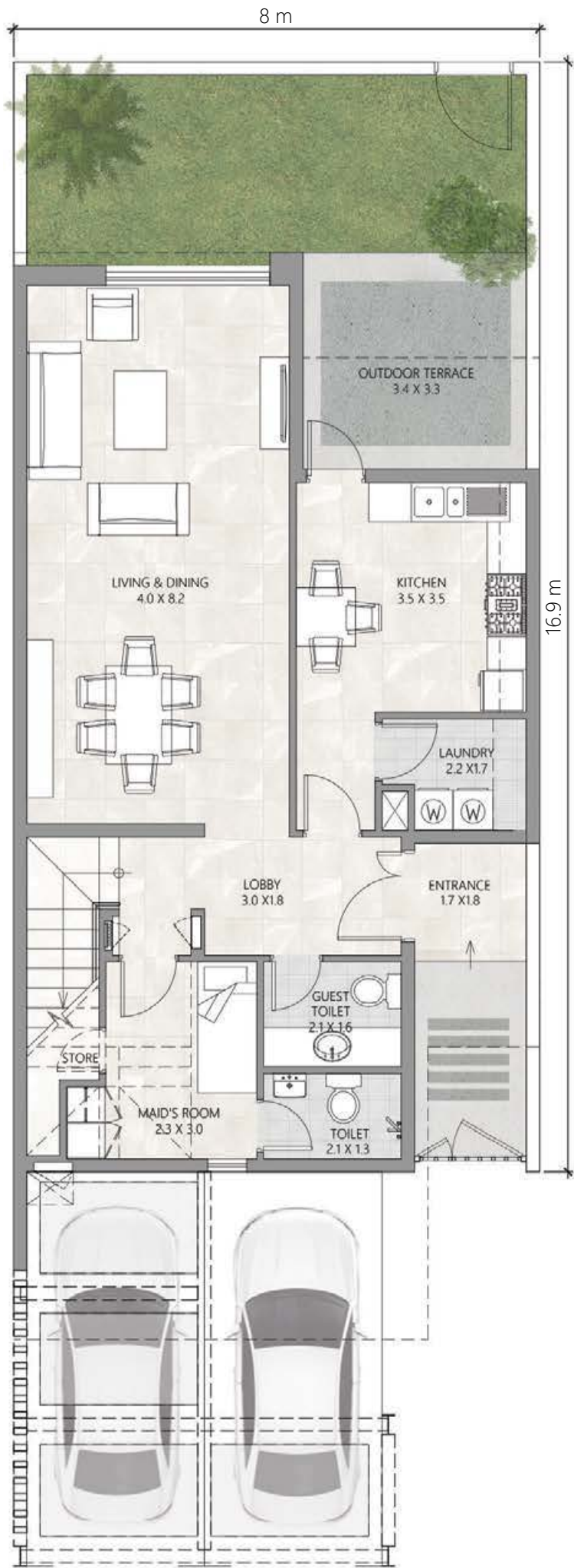
FLOOR PLAN

THREE BEDROOM-B

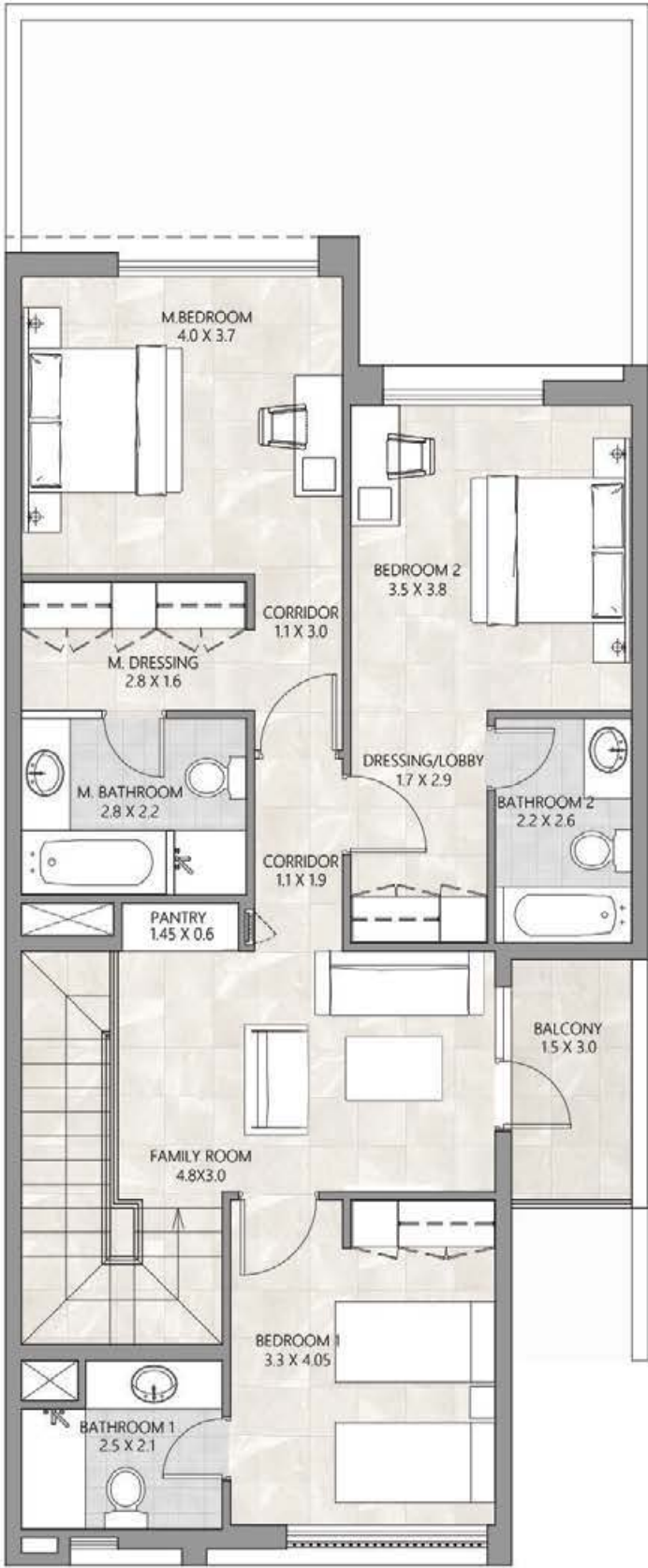
MIDDLE TYPE

BUA 2,225.1 SQ. FT.
GARDEN 533.8 SQ. FT.

GROUND LEVEL PLAN



FIRST LEVEL PLAN



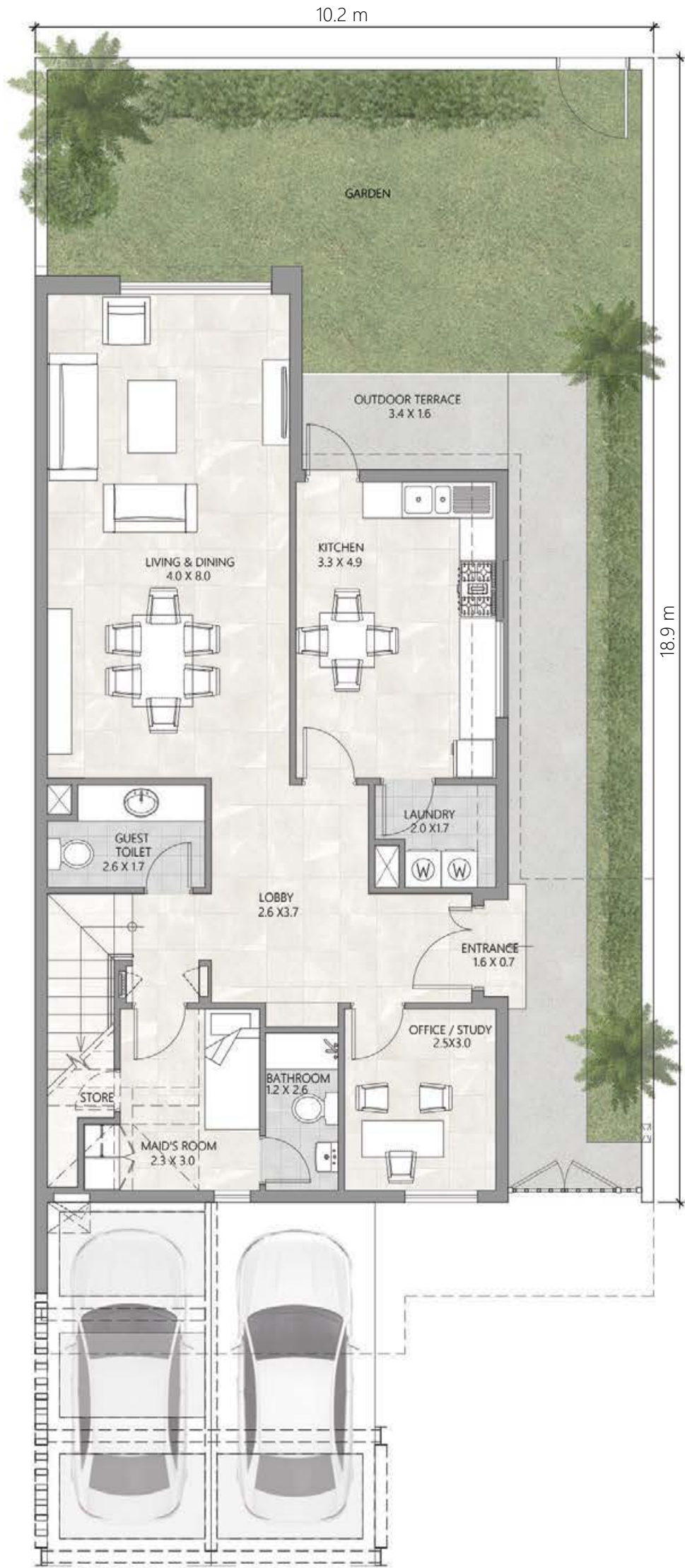
FLOOR PLAN

FOUR BEDROOM

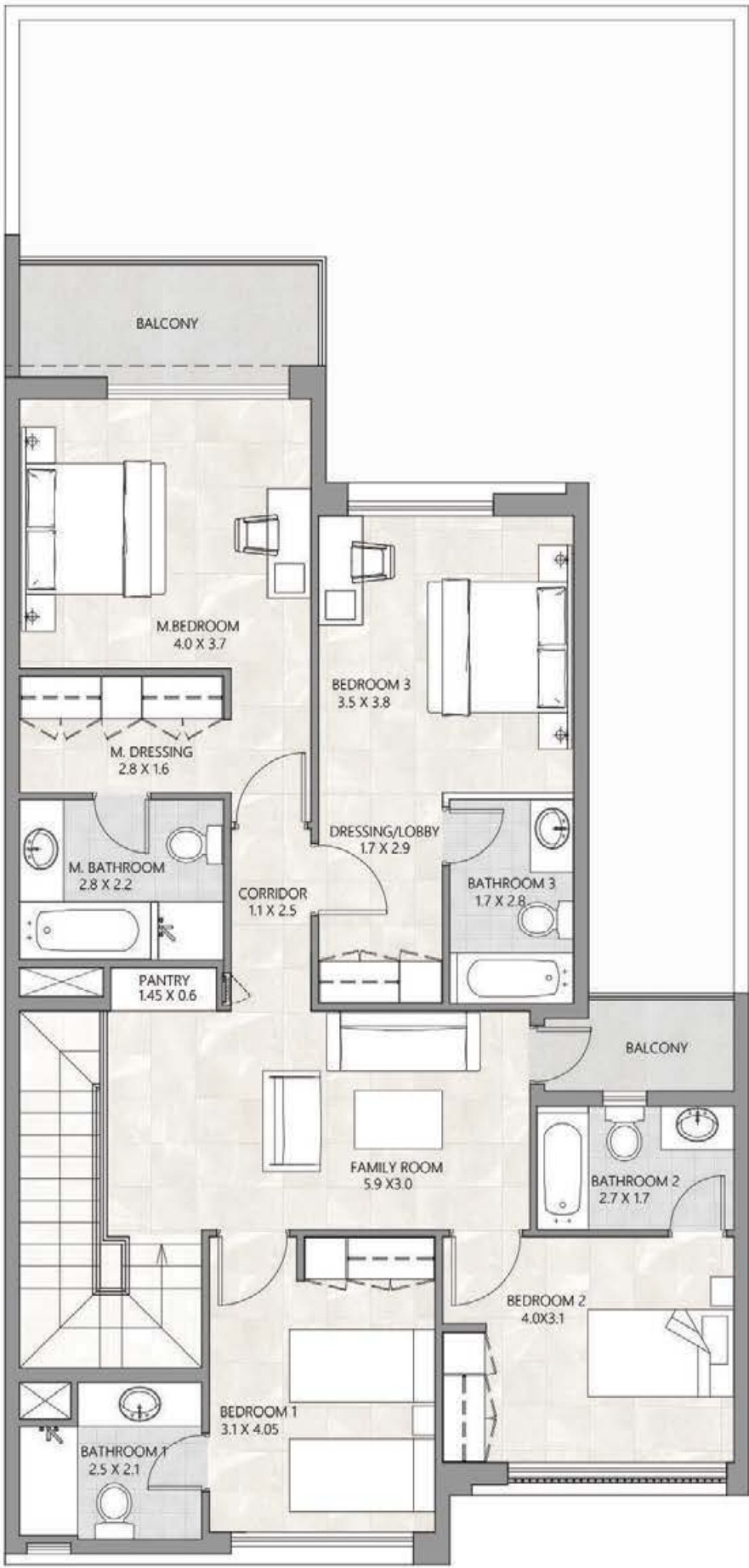
SEMI DETACHED VILLA

BUA 2,719.3 SQ. FT.
GARDEN 1,176.2 SQ. FT.

GROUND LEVEL PLAN



FIRST LEVEL PLAN



THE PULSE VILLAS

A development by  DUBAI SOUTH

THE PULSE VILLAS

A development by  DUBAI SOUTH



THE PULSE VILLAS

FOR MORE INFORMATION PLEASE CONTACT



📞 +971 55 476 7630
☎️ +971 4 368 7878
✉️ info@afsrealestate.com
🌐 www.afsrealestate.com



📞 +971 50 674 2020
☎️ +971 4 368 7878
✉️ info@dubricks.com
🌐 www.dubricks.com

A development by

